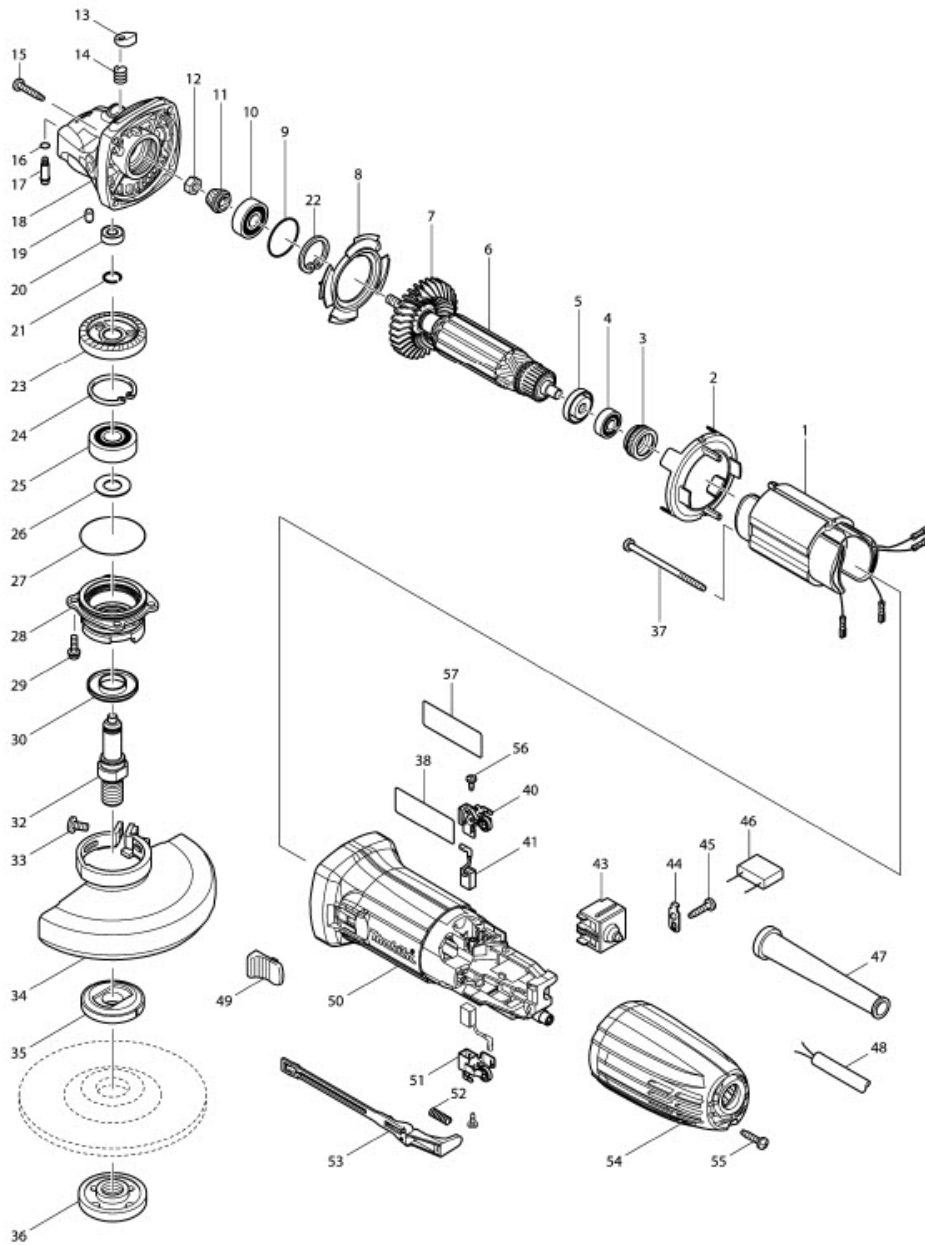


# Part Diagram

Model No.GA5030 125MM ANGLE GRINDER



Item	Sub	Parts No.	Parts Description	Qty
001A		623533-4	FIELD 220-240V	1
001-1A		635113-4	FIELD 220-240V	1
001-1B		635113-4	FIELD 220-240V	1
2		450796-7	BAFFLE PLATE	1
3		421868-5	LABYRINTH RUBBER RING 19	1
4		210034-7	BALL BEARING 607LLB	1
5		681636-0	INSULATION WASHER	1
6		517649-4	ARMATURE ASS'Y 240V	1
6	D10		INC. 4,5,7	
007A		240107-2	FAN 56	1
007-1A		240139-9	FAN 56	1
007-1B		240139-9	FAN 56	1
8		413126-3	GUIDE PLATE	1
9		213445-5	O-RING 26	1
10		211092-6	BALL BEARING 629DDW	1
11		227545-5	SPIRAL BEVEL GEAR 10	1
12		252186-8	HEX. NUT M6	1
13		417771-6	PIN CAP	1
14		234057-1	COMPRESSION SPRING 8	1
15		266324-6	TAPPING SCREW 4X22	4
016A		213960-9	O RING 5	1
016-1A		213032-0	O RING 4	1
016-1B		213032-0	O RING 4	1
17		256510-7	SHOULDER PIN 4	1
18		318335-8	GEAR HOUSING	1
19		263002-9	RUBBER PIN 4	1
20		210033-9	BALL BEARING 696ZZ	1
21		233950-6	RING SPRING 11	1
22		962105-3	RETAINING RING R-26	1
23		227546-3	SPIRAL BEVEL GEAR 37	1
24		962151-6	RETAINING RING R-32	1
25		211129-9	BALL BEARING 6201DDW	1
26		267113-2	FLAT WASHER 12	1
026-1		267238-2	FLAT WASHER 12	1
27		213561-3	O RING 42	1
28		318336-6	BEARING BOX	1
29		265099-4	PAN HEAD SCREW M4X14	4
30		345464-4	LABYRINTH RING	1
32		324954-0	SPINDLE	1
33		265180-1	PAN HEAD SCREW M5X16	1
034A		135240-2	WHEEL COVER ASS'Y	1
034A	D10		INC. 33	
034-1A		122887-1	WHEEL COVER 125K ASSY	1
034-1A	C10	213009-5	O RING 4	1
034-1A	D10		INC. 33	
034-2A		123099-9	WHEEL COVER 125AK ASSEMBLY	1
034-2A	C10	213009-5	O RING 4	1
034-2A	D10		INC. 33	
034-2B		123099-9	WHEEL COVER 125AK ASSEMBLY	1
034-2B	C10	213009-5	O RING 4	1
034-2B	D10		INC. 33	
035A		224415-9	INNER FLANGE 42	1
035-1A		224490-5	INNER FLANGE 14-45	1
035-1B		224490-5	INNER FLANGE 14-45	1
36		224554-5	LOCK NUT 14-45	1
37		266325-4	TAPPING SCREW 4X70	1
38		866062-6	GA5030 NAME PLATE	1
40		643839-4	BRUSH HOLDER 6X9	1

Item	Sub	Parts No.	Parts Description	Qty
41		194722-3	CARBON BRUSH CB-459	1
043A		650560-8	SWITCH DPX-2110-R	1
043-1A		650621-4	SWITCH PS10	1
043-1B		650621-4	SWITCH PS10	1
44		687681-3	STRAIN RELIEF	1
45		266326-2	TAPPING SCREW 4X18	1
47		682559-5	CORD GUARD 8	1
48		692021-2	POWER SUPPLY CORD 1.0-2-2.5	1
49		419566-3	SWITCH KNOB	1
50		450795-9	MOTOR HOUSING	1
51		643839-4	BRUSH HOLDER 6X9	1
52		233121-5	COMPRESSION SPRING 4	1
53		450797-5	SWITCH LEVER	1
54		450794-1	REAR COVER	1
55		266326-2	TAPPING SCREW 4X18	1
056A		265954-0	TAPPING SCREW BIND PT3X8	2
056-1A		266492-5	TAPPING SCREW 3X8	2
056-1B		266492-5	TAPPING SCREW 3X8	2
057A		819327-5	CLEAR LABEL	1
057-1A		891976-0	CLEAR LABEL	1
057-1B		891976-0	CLEAR LABEL	1
A01		153504-2	GRIP 36 COMPLETE	1
A02		782423-1	LOCK NUT WRENCH 35	1

